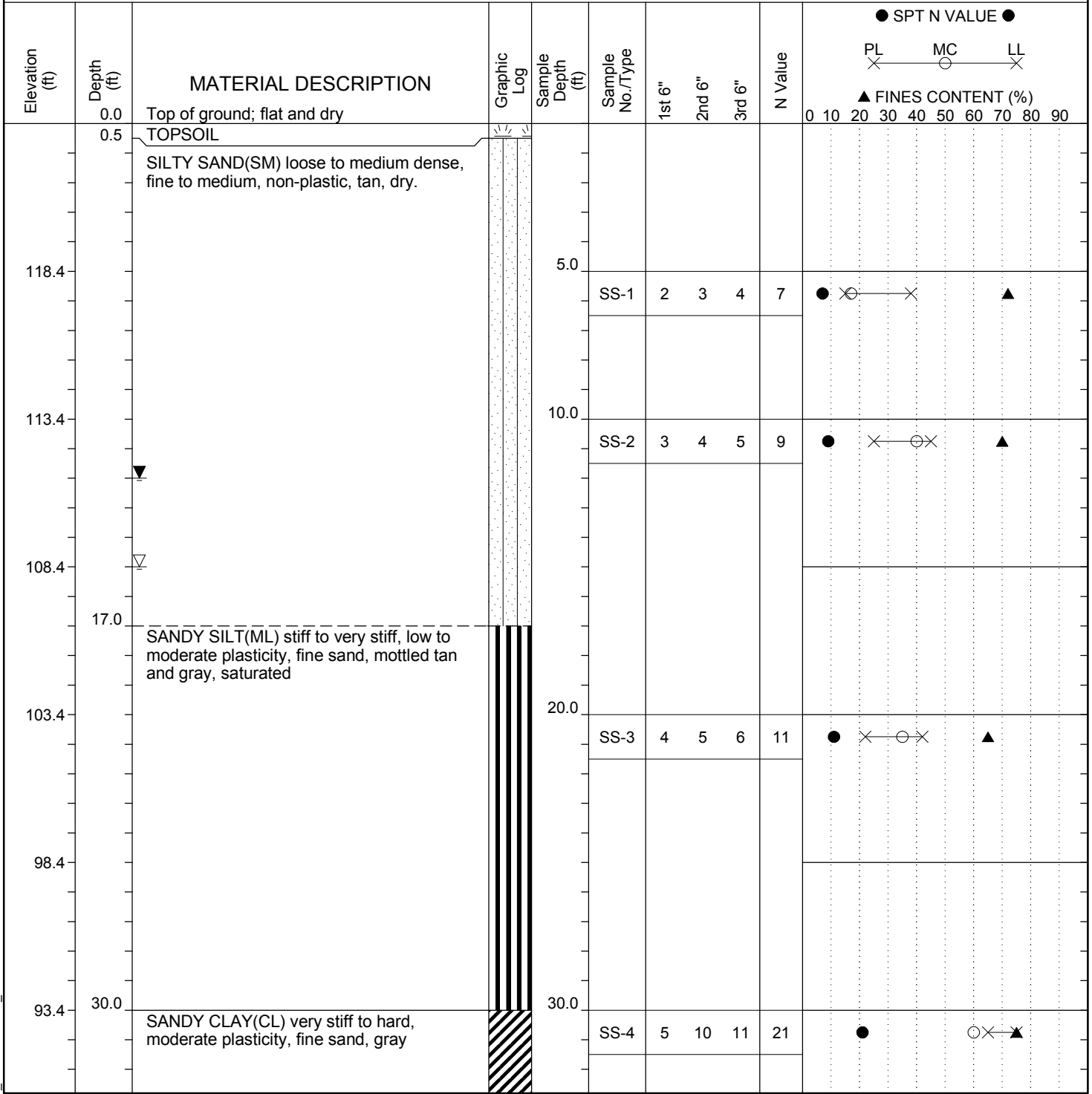


SCDOT Soil Test Boring Log

File No.:	1526.523	Project No. (PIN):	1234-ABCD	County:	Red Rock	Boring No.:	B-1
Site Description:	gINT Sample					Route:	SC 160
Eng./Geo.:	Alfred Boring	Boring Location:	100+50	Offset:	30 LT	Alignment:	Mainline
Elev.:	123.4 ft	Latitude:	100	Longitude:	360	Date Started:	7/14/2006
Total Depth:	55.75 ft	Soil Depth:	39 ft	Core Depth:	16.75 ft	Date Completed:	7/15/2006
Bore Hole Diameter (in):	4.5	Sampler Configuration		Liner Required:	Y N	Liner Used:	Y N
Drill Machine:	CME-750	Drill Method:	HSA to RC	Hammer Type:	Automatic	Energy Ratio:	100%
Core Size:	NQ Wireline	Driller:	Alfred Boring	Groundwater:	TOB 7.5 ft	24HR	15 ft



LEGEND

Continued Next Page

SAMPLER TYPE		DRILLING METHOD	
SS - Split Spoon	NQ - Rock Core, 1-7/8"	HSA - Hollow Stem Auger	RW - Rotary Wash
ST - Shelby Tube	CU - Cuttings	CFA - Continuous Flight Augers	RC - Rock Core
AWG - Rock Core, 1-1/8"	CT - Continuous Tube	DC - Driving Casing	

SC.DOT SC.DOT PROJ.GPJ SC.DOT.GDT 6/11/12

