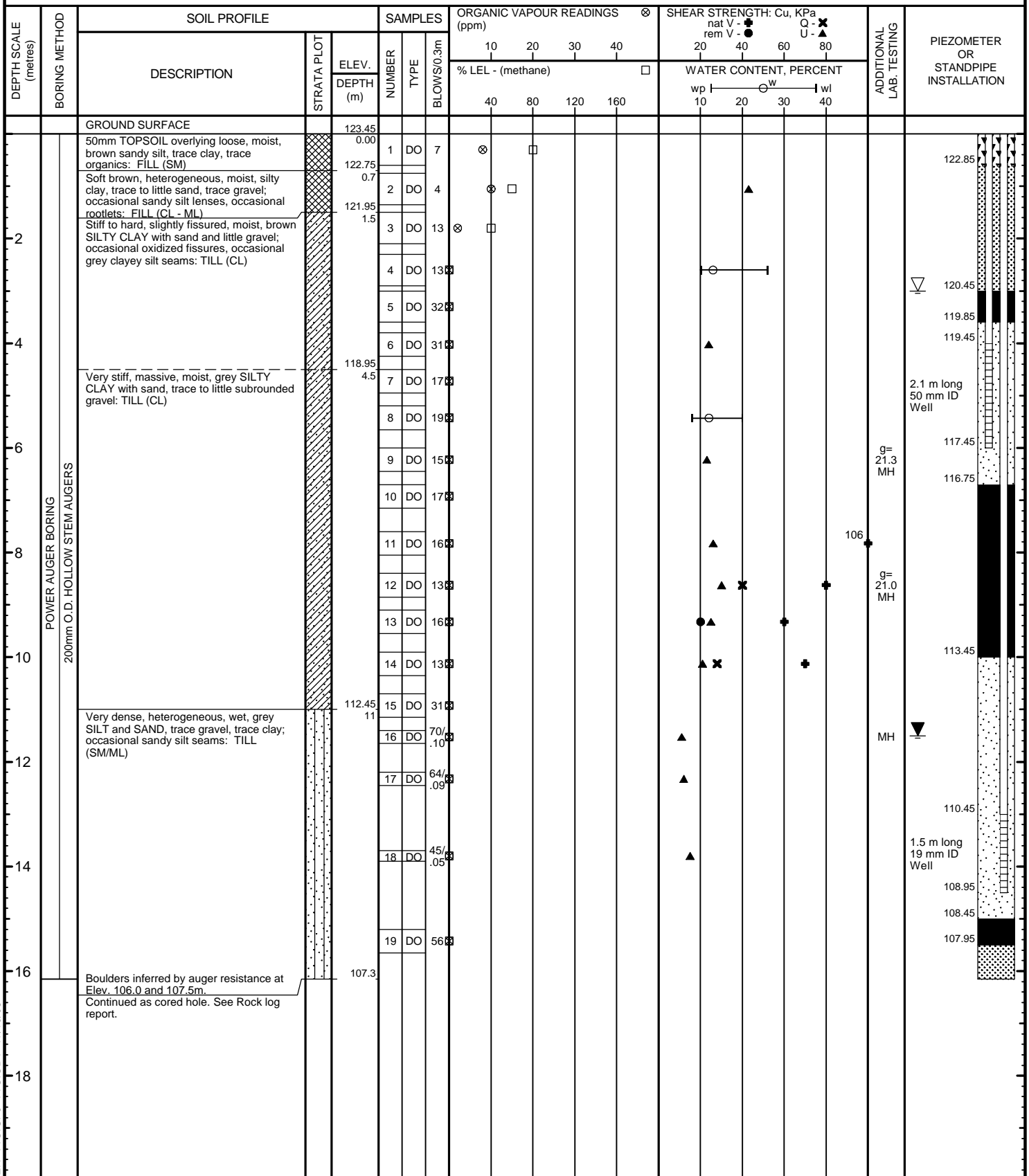


# RECORD OF BOREHOLE B110



PROJECT : Toronto Transit Commission gINT Example  
 LOCATION : N 12,345 E 54,321  
 STARTED : 1 September 2000  
 COMPLETED : 2 September 2000

Toronto Transit  
 Commission  
 SHEET 1 of 2  
 DATUM GEODETIC



### GROUNDWATER ELEVATIONS

▽ SHALLOW/SINGLE INSTALLATION  
 WATER LEVEL (date) 9/9/2000

▼ DEEP/DUAL INSTALLATION  
 WATER LEVEL (date) 9/10/2000

LOGGED : ABC  
 CHECKED : ZYX

Logo

TTC OVERBURDEN TTC.GPJ TTC.GDT 17/10/03