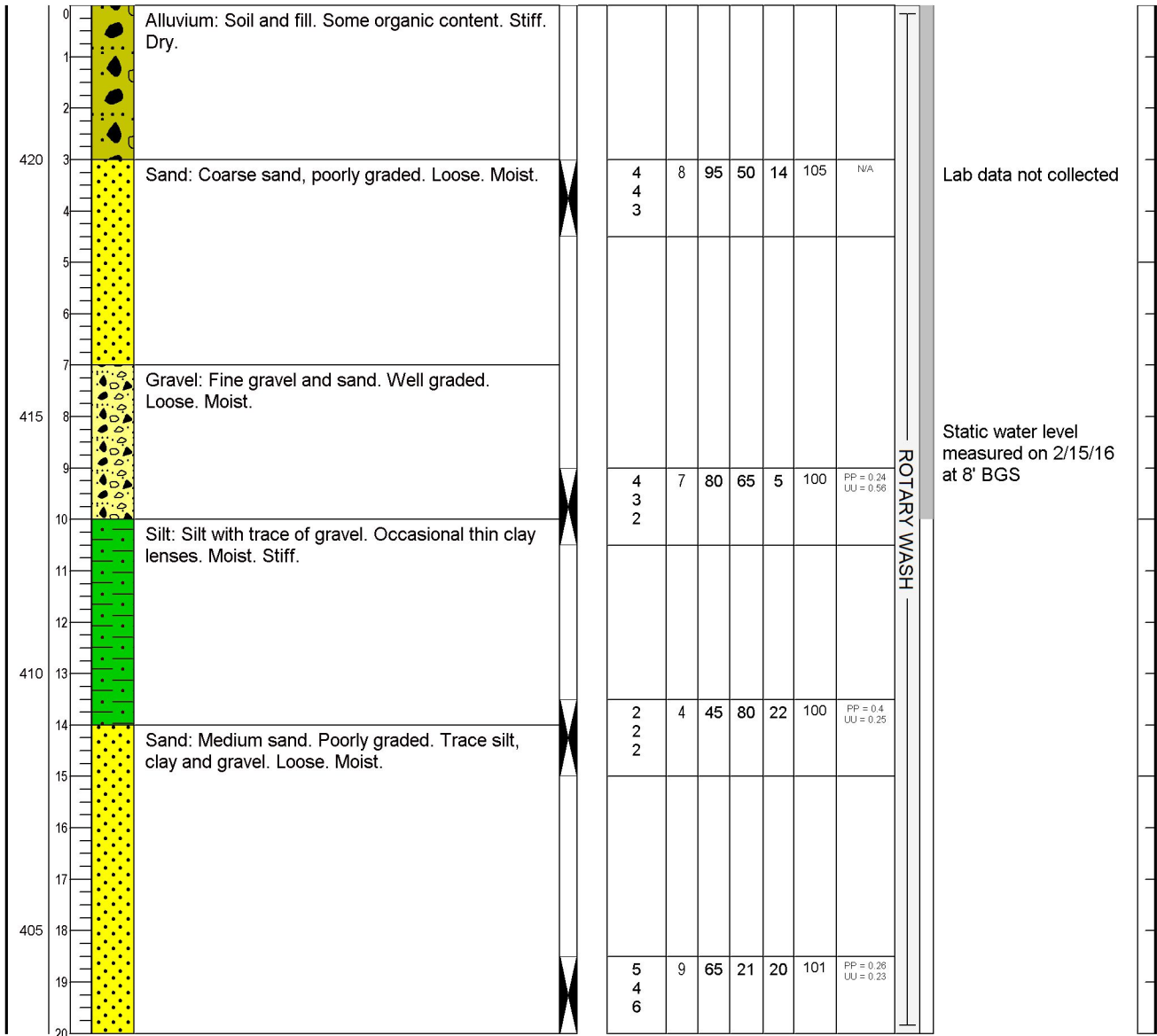



LOGGED BY John Doe	BEGIN DATE 2/14/2016	COMPLETION DATE 2/14/2016	BOREHOLE LOCATION (Lat/Long or North/East and Datum) UTM Coordinates				HOLE ID H-1								
DRILLING CONTRACTOR DrillingContractor			BOREHOLE LOCATION (Offset, Station, Line) none			SURFACE ELEVATION 423 ft AMSL									
DRILLING METHOD Rotary Wash			DRILLING RIG A1			BOREHOLE DIAMETER 8 in									
SAMPLER TYPE(S) AND SIZES (ID) 2 in			STP HAMMER TYPE 152 lb			HAMMER EFFICIENCY, ERI normal									
BOREHOLE BACKFILL AND COMPLETION Soil Backfill			GROUNDWATER READINGS None	DURING DRILLING None	AFTER DRILLING (DATE) N/A	TOTAL DEPTH OF BORING 20 ft									
ELEVATION (ft)	DEPTH (ft)	Material Graphics	DESCRIPTION	Sample Location	Sample Number	Blows per 6 in.	Blows per foot	Recovery (%)	RQD (%)	Moisture Content (%)	Dry Unit Weight (pcf)	Shear Strength (kSF)	Drilling Method	Casing Depth	Remarks



 <p>Department of Transportation Division of Engineering Services Geotechnical Services Office of Geotechnical Design - West</p>	REPORT TITLE Test Boring 1				HOLE ID H-1
	DIST. 1	COUNTY LA	ROUTE I-5	POSTMILE 136	EA -
	PROJECT OR BRIDGE NAME Overpass				
	BRIDGE NUMBER 12	PREPARED BY Robert A. Booy		DATE 2/28/2016	SHEET 1